



## BÜHLMANN fCAL® turbo Customer Testimonials

### Siemens Clinical Chemical Analyser

#### Siemens Advia 2400

Unilabs, Portugal, Dr. J. P. Ramos

"By switching to BÜHLMANN fCAL® turbo we gained a lot of flexibility in our work model with a clear improvement of the laboratory workflow management"

"Using the CALEX® allowed us to have less trained technicians preparing the stool sample extracts"



#### Siemens Advia XPT

James Cook University Hospital, Middlesbrough, UK, A. Teggert

"The fCAL® turbo has made calprotectin analysis significantly easier"

"A major advantage of the BÜHLMANN fCAL® turbo is the direct link between the analyser and the LIM system"



### Roche Clinical Chemical Analyser

#### Roche cobas® c501

City Hospital Triemli, Zurich, CH, A. Grünauer, Dr. J. Barman-Aksözen and P. Nesic

"The BÜHLMANN fCAL® turbo assay is very easy, fast, flexible and feasible at any time"

"The extraction using CALEX® Cap is clean, fast and efficient"



#### Roche cobas® c501

Laborgemeinschaft 1, Medizinisches Labor, Zurich, CH, C. Gugliotta

"Our concerns of observing contaminations by measuring fecal samples right next to serum samples were completely unfounded"

"Using the BÜHLMANN fCAL® turbo we can offer a faster service for our customers"



#### Roche cobas® c501

Cumberland Infirmary, Carlisle, UK, P. Bowe

"Stool samples were extracted using the CALEX® Cap extraction device and can be loaded directly onto the clinical chemistry analyser"

"The BÜHLMANN fCAL® turbo assay is an ideal assay for the growing need for a flexible, random access and high throughput assay"



#### Roche cobas® c501

Bioanalytica, Lucerne, CH, Y. Schallberger

"The introduction of the BÜHLMANN fCAL® turbo has significantly simplified our daily routine"

"The CALEX® Cap is by far the best stool extraction device that I have ever used"

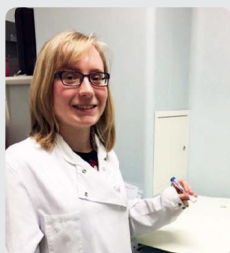


### Roche cobas® c702

Queen Elizabeth Hospital Birmingham, UK, R. Forster and K. Smith

"The large analytical range of BÜHLMANN fCAL® turbo enables screening of undiagnosed patients and monitoring of known IBD patients using the same assay"

"Routine running of the BÜHLMANN fCAL® turbo has demonstrated clear benefits in staff time"



### Roche cobas® c702

Newcastle upon Tyne Hospitals, Newcastle, UK, Dr. Elodie Hanon

"The extraction process with the CALEX® Cap is much quicker than with the method used before, since there are fewer steps involved"

"The gastroenterologists were very positive about the switch to BÜHLMANN fCAL® turbo, especially when they realised we could test liquid samples and report results up to 8000 µg/g."



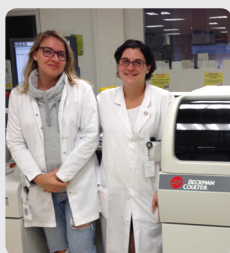
## Beckman Clinical Chemical Analyser

### Beckman Coulter AU5800

Laboratory CEF-BOULARD, Paris, FR, D. Le Bris and Dr. I. Bernard

"The wide measuring range up to 2000 µg/g without the need for additional dilution provides a real advantage"

"BÜHLMANN fCAL® turbo shows nice repeatability and is comparable to results obtained with the ELISA"



### Beckman Coulter AU5800

SYNLAB Suisse SA, Zurich, CH, A. Suter and Dr. C. Fuhrer

"The handling and preparation of the BÜHLMANN fCAL® turbo assay on our chemistry analyser is faster and easier than before"

"The CALEX® Cap can be put directly on the Beckman Coulter AU5800"

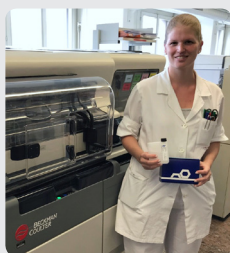


### Beckman Coulter DxC 800

Centre for laboratory Medicine, St. Gallen, CH, M. Kobelt and K. Jung

"Incoming samples are extracted with the CALEX® Cap extraction device and tested all in the same day"

"The handling of the new method is comparable to any other clinical chemistry assay"

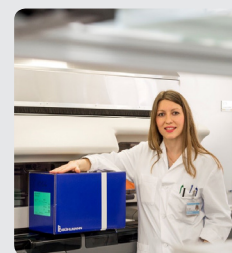


### Beckman Coulter DxC 600

Children's Hospital of Zurich, Zurich, CH, M. Barbieru

"The fCAL® turbo from BÜHLMANN can be used with our existing laboratory equipment"

"By using the CALEX® Cap extraction device, there is nothing that can go wrong with the sample processing"



## Abbott Clinical Chemical Analyser

### Abbott Architect C8000

Mercy University Hospital in Cork, Cork, IE, M. O'Connell née Deasy

"The fCAL® turbo calprotectin assay is an attractive option since it gives results significantly faster than an ELISA"

"The fCAL® turbo results correlates very well with the patients clinical presentation and stage of IBD"



MFCT059ML-02 E