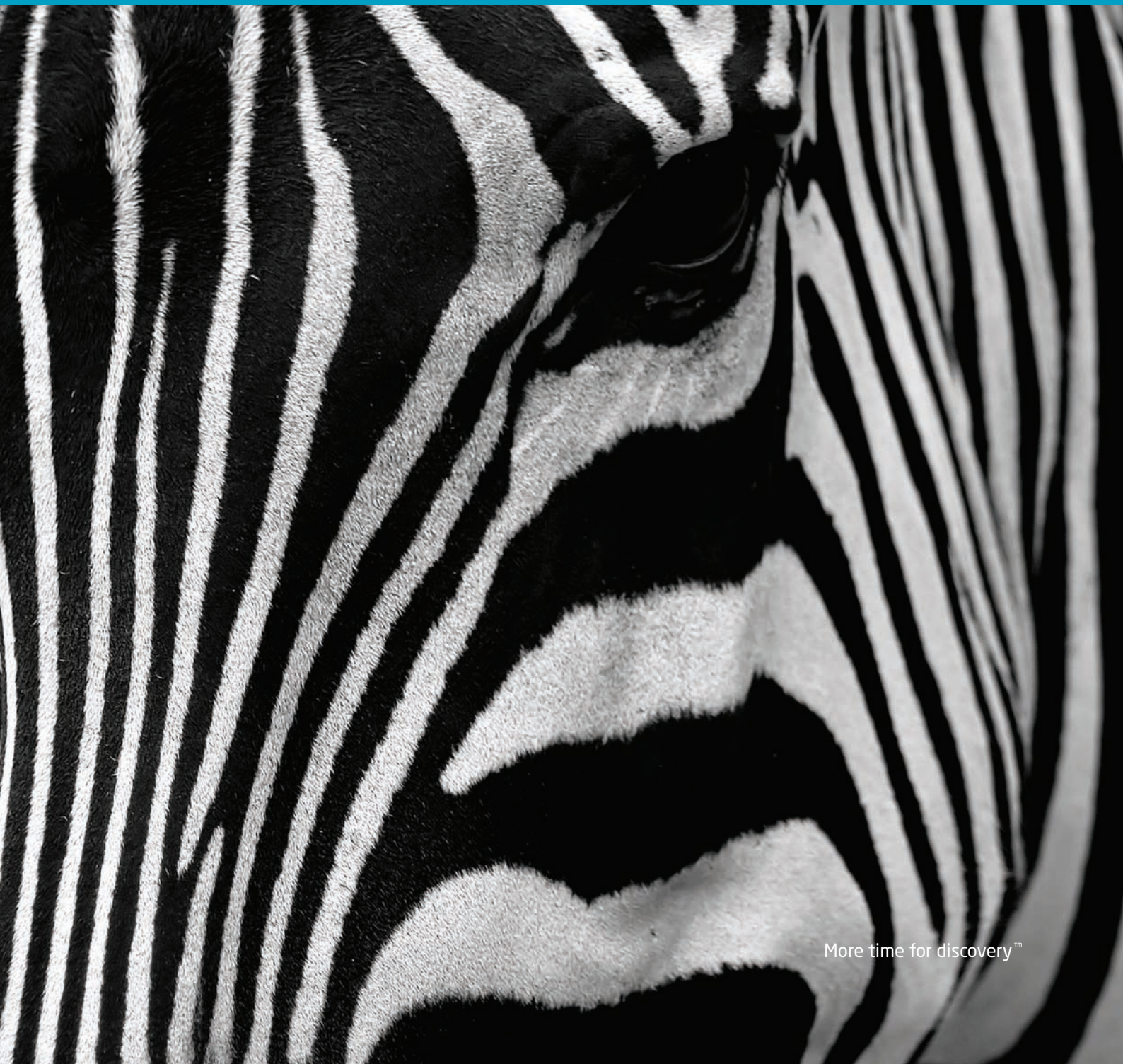


lab901

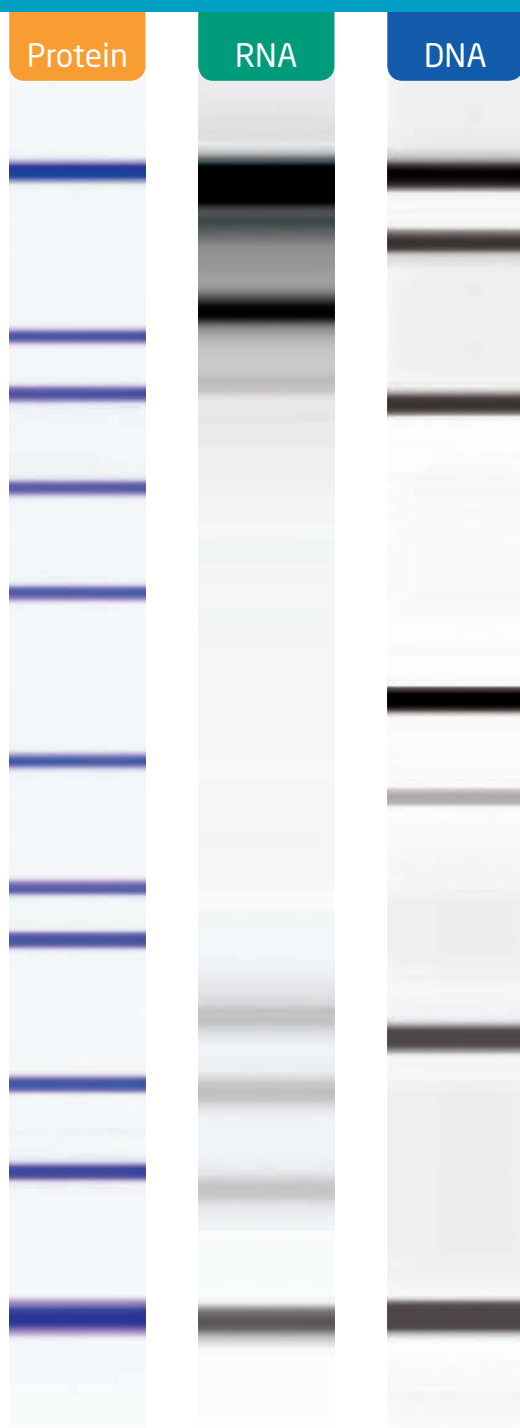
Automated gel electrophoresis in 10 minutes



More time for discovery™

More time for discovery™

The Lab901 ScreenTape® system is a fully automated solution for gel electrophoresis. In 10 minutes our system will load, separate, image and analyse your samples, giving you more time for discovery.



At Lab901 we believe that your time should be dedicated to innovation, not repetitive manual tasks. We have therefore combined the best of automation, engineering and life sciences to bring you ScreenTape. The novel ScreenTape system is made up of three elements: a consumable tape, an instrument and a software package.

1 - ScreenTape

This credit card sized consumable contains multiple mini-gels for separating DNA, RNA or protein. ScreenTape has pre-packaged reagents, a barcoded label and microscale features. This means:

- Faster separation and lower sample usage
- No reagent preparation or chip priming
- Reproducible and traceable results
- No contact with hazardous substances
- Less mess and less waste

2 - TapeStation®

Our compact instrument is the first truly walkaway solution for gel electrophoresis. It automates sample loading, separation and imaging, which allows you to:

- Save valuable time
- Increase reproducibility and reduce errors
- Preserve bench space
- Remove the need for gel tanks, buffer bottles and a gel documentation system

3 - Analysis Software

The simple, intuitive software makes gel analysis quick and easy. Once the gel is imaged, GeneTools™ automatically sizes your bands, archives the results and enables effortless reporting. This means:

- Less time spent on gel analysis
- Clear and familiar result formats
- One-click export to Word and Excel
- GLP standard lab book printouts
- Enhanced traceability
- Simplified band matching and sample comparison

Once you have purchased a ScreenTape system, gel analysis is as easy as 1 - 2 - 3!

- 1 - Place samples into the TapeStation
- 2 - Press Start
- 3 - Obtain analysed results in 10 minutes



Contact

Lab901 Limited

IMEX Business Centre
Bilston Glen, Loanhead
EH20 9LZ, UK

t +44 (0) 131 448 2904

f +44 (0) 131 448 0679

w www.lab901.com

e info@lab901.com

Orders and Technical Support +44 (0)131 440 0000

Product information

Catalogue number	Item description	Quantity
Instrumentation		
ST010	TapeStation	1
ScreenTape for Protein Analysis		
ST109	ScreenTape P200	7 tapes
ST227	ScreenTape P200 Standard Protein Sample Kit (contains molecular weight standards, in-lane markers, protein stain, reducing sample loading buffer and sample diluent)	1 kit
ST235	ScreenTape P200 Non-reducing Reagent Supplement (contains non-reducing in-lane markers and non-reducing loading buffer)	1 kit
ScreenTape for RNA Analysis		
ST108	ScreenTape R6K	7 tapes
ST223	ScreenTape R6K Standard Loading Buffer Kit (total RNA and cRNA)	1 kit
ST225	ScreenTape R6K High Sensitivity Loading Buffer Kit	1 kit
ScreenTape for DNA Analysis		
ST102	ScreenTape D800	7 tapes
ST200	ScreenTape D800 Loading Buffer	1
ST202	ScreenTape D800 Ladder	1
ST204	ScreenTape DNA Sample Diluent	1
Accessories		
ST208	ScreenTape Needle Replacement Cartridge	1
ST214	ScreenTape Loading Tips	3,840 tips
ST219	ScreenTape Sample Microtitre Plates	1 box
ST221	ScreenTape 0.2 ml Sample Tube Strips	1 box
ST222	ScreenTape Sample Barcode Scanner	1

Sign-up at www.lab901.com and be the first to hear about our new application notes.

Lab901, the Lab901 logo, ScreenTape, TapeStation and "More time for discovery" are either registered trademarks or trademarks of Lab901 Limited in the United Kingdom and/or other countries. GeneTools™ is a trademark of Synoptics Ltd. Some of these products contain SYBR® Green I or SYBR® Gold, which are licensed from Molecular Probes Inc. under US patent numbers 5,436,134 and 5,658,751 for use in research and development only. SYBR® is a registered trademark of Molecular Probes, Inc. Protein standards in this product are used under license from Fermentas UAB. Protein stains in this product are used under license from Active Motif Chromeon GmbH. All other trademarks are the property of their respective owners. ©2009 Lab901 Limited. All rights reserved.