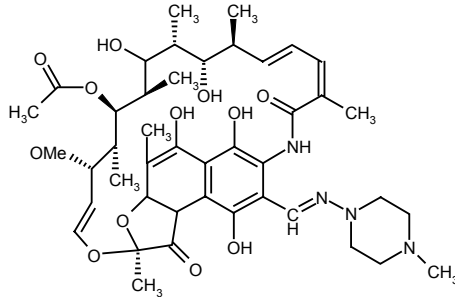




Rifampicin

Antibiotics



$C_{43}H_{58}N_4O_{12}$
MW 823.0

Order Code BAG2-CRIF

Generic Names Rifampicin; Rifaldazine, Rifamycin AMP; R/AMP; Abrifam; Eremfat; Rifa; Rifadine; Rifaldine Rifaldin, Rifaprodin; Rifoldin; Rimactane

Instruction for use Use a fresh allergen vial each time a new stimulation is performed
Dissolve the allergen prior to use as follows:
Add 250 µl of Stimulation Buffer to vial, vortex briefly
Use allergen solution according to the protocol

Recommendation Additional to the normal concentration of the allergen given, we recommend to stimulate the cells with 1:5 diluted allergen solution
(Mix 40 µl of allergen solution with 160 µl of stimulation buffer)

n Stimulation Up to 4 stimulations could be run with 1 vial

Storage Store unopened allergens at 2-8°C until exp. date

| | CAST®-2000 | Flow-CAST® | Flow2 CAST® |
|----------------------------|--------------------|------------------------------|------------------------------|
| Content per vial 25 µg | | | |
| Conc. in vial 100 µg/ml | | | |
| Conc. in stimulation | 20 µg/ml | 50 µg/ml | 22.7 µg/ml |
| Cut-off | ≥ 100 pg/ml | ≥5% CD 63 SI*(≥2) | ≥5% CD 63 SI*(≥2) |

CAST®-Allergens are intended for in vitro leucocyte stimulation in the CAST®-Assays
*SI (Stimulation Index) is defined as the gross stimulation divided by the negative control value