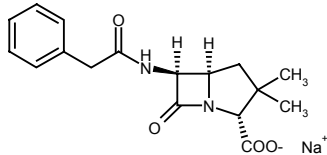




# Penicillin G

Benzylpenicillin

## Antibiotics



$C_{16}H_{17}N_2NaO_4S$   
MW 356.4  
sodium salt

**Order Code BAG2-C1**

**Generic Names** Benzylpenicillin Sodium; Sodium Penicillin II; Sodium Benzylpenicillinate; Benzylpenicillic Acid Sodium Salt; Penicillin: American Penicillin; Nalpen G; Novocillin; Penilaryn; Pen-A-Brasive; Veticillin

**Instruction for use** Use a fresh allergen vial each time a new stimulation is performed  
Dissolve the allergen prior to use as follows:  
Add 250 µl of Stimulation Buffer to vial, vortex briefly  
Use allergen solution according to the protocol

**Recommendation** Additional to the normal concentration of the allergen given, we recommend to stimulate the cells with 1:5 diluted allergen solution  
(Mix 40 µl of allergen solution with 160 µl of stimulation buffer)

**n Stimulation** Up to 4 stimulations could be run with 1 vial

**Storage** Store unopened allergens at 2-8°C until exp. date

	<b>CAST®-2000</b>	<b>Flow-CAST®</b>	<b>Flow2 CAST®</b>
Content per vial 1 mg <sup>1)</sup>			
Conc. in vial 4 mg/ml			
Conc. in stimulation	800 µg/ml	2 mg/ml	910 µg/ml
<b>Cut-off</b>	<b>≥ 50 pg/ml</b>	<b>≥5% CD 63 SI*(≥2)</b>	<b>≥5% CD 63 SI*(≥2)</b>

CAST®-Allergens are intended for in vitro leucocyte stimulation in the CAST®-Assays

<sup>1)</sup>Optimized concentration confirmed in a multicentric study for use in CAST®-ELISA and Flow-CAST®

\*SI (Stimulation Index) is defined as the gross stimulation divided by the negative control value