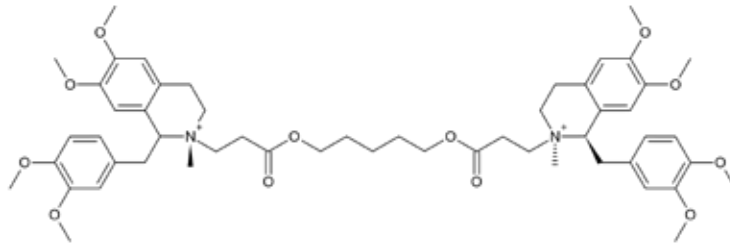




Cisatracurium

Anaesthetics



$C_{53}H_{72}N_2O_{12} \times 2C_6H_5SO_3$

MW 929.1

Besylate

Order Code BAG2-CCAT

Brands and Generic Names Nimbex®

Instruction for use Use a fresh allergen vial each time a new stimulation is performed
Dissolve the allergen prior to use as follows:
Add 250 µl of Stimulation Buffer to vial, vortex briefly
Use allergen solution according to the protocol

N Stimulation 1 vial is sufficient for up to 4 stimulations

Storage Store unopened vials at 2-8°C until exp. date
Do not store reconstituted allergens

Recommendation Additional to the normal concentration of the allergen given, we recommend to stimulate the cells with 1:5 diluted allergen solution
(Mix 40 µl of allergen solution with 160 µl of stimulation buffer)

Content per vial 100 µg

Conc. in vial 400 µg/ml after reconstitution

	CAST®-2000	Flow-CAST®	Flow2 CAST®
Conc. in stimulation	80 µg/ml	200 µg/ml	91 µg/ml
Cut-off	40 pg/ml	n.d.	≥5% CD63; *SI ≥2

A Commitment to Diagnostics

CAST®-Allergens are designed for in vitro leucocyte stimulation in the CAST®-Assays
*SI (Stimulation Index) is defined as the gross stimulation divided by the negative control value



BÜHLMANN Laboratories AG
Baselstrasse 55
CH-4124 Schönenbuch/Basel
Switzerland

Phone +41 61 487 12 12
Fax orders +41 61 487 12 99
info@buhlmannlabs.ch
www.buhlmannlabs.ch



ADSO14-04E_CCAT

CAST® is a registered trademark of BÜHLMANN.